



SERVICE PARTS LIST

BULLETIN NO.
54-06-9010

SPECIFY CATALOG NO. AND SERIAL NO. WHEN ORDERING PARTS		REVISED BULLETIN	DATE
M18™ LED Truck Mounted Light			July 2022
CATALOG NO.	2123-20	STARTING SERIAL NO.	K73A
			WIRING INSTRUCTION See Pages 5-7

EXAMPLE:
Component Parts
(Small #) Are
Included When
Ordering Assembly
(Large #)

**SCREW TORQUE
SPECIFICATION
CHART ON PAGE 5**

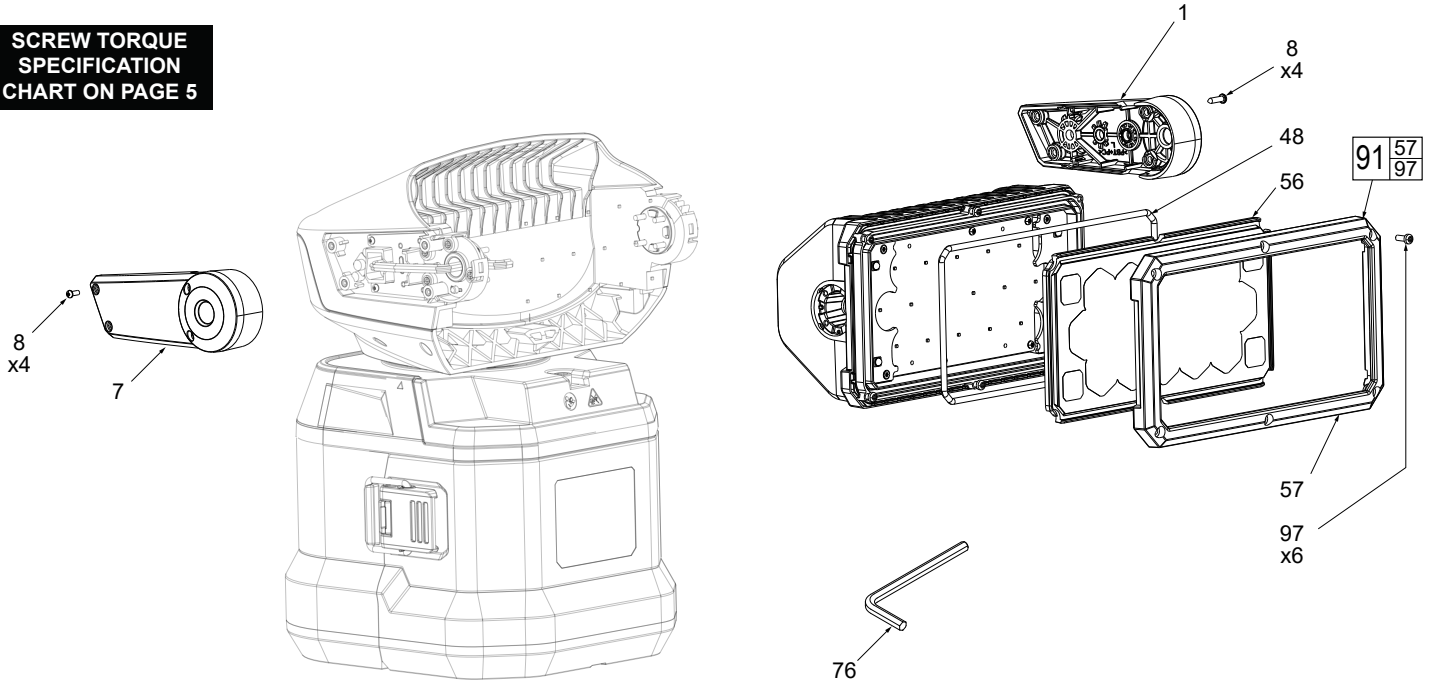
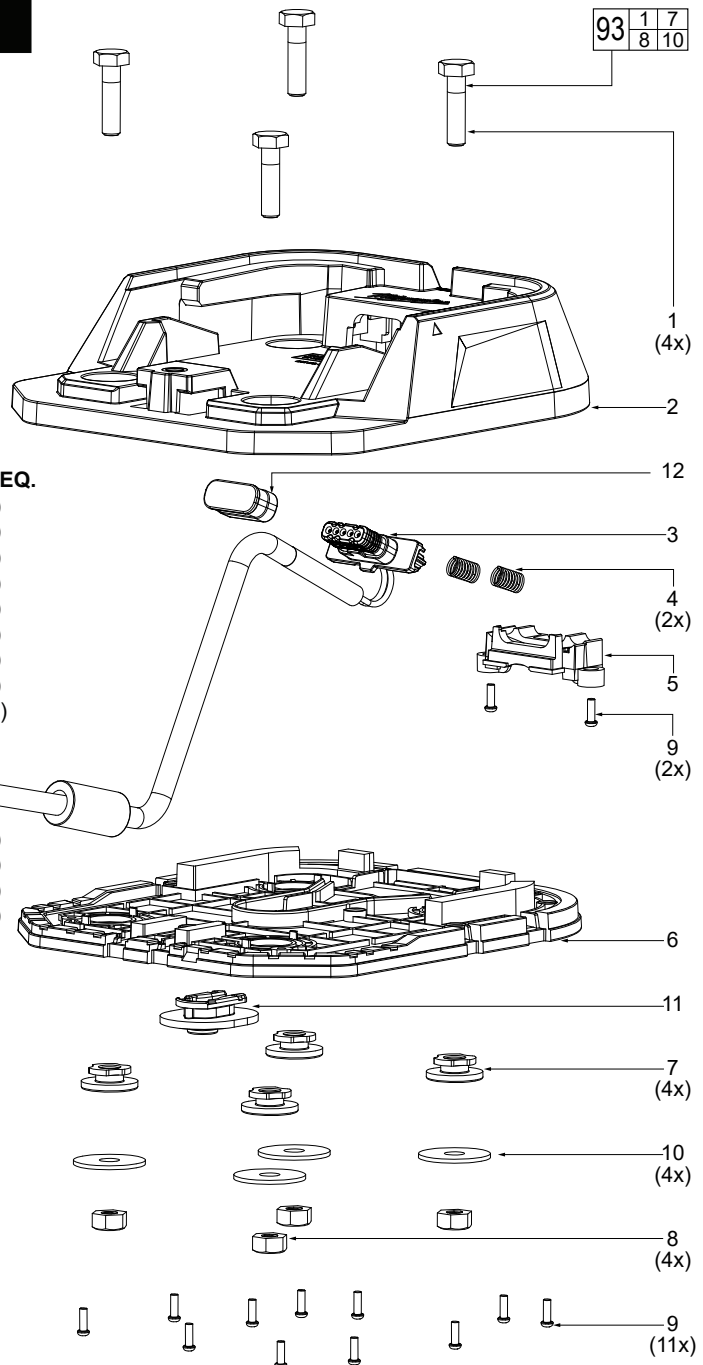


FIG.	PART NO.	DESCRIPTION OF PART	NO. REQ.
1	45-60-0905	Support Housing-Left	(1)
7	45-60-0907	Support Cover-Right	(1)
8	06-82-9704	PM2.5 x 8mm Pan Hd. Phillips Screw	(8)
48	-----	Lens Gasket	(1)
56	-----	TML Optic Lens	(1)
57	-----	Front Cover	(1)
76	49-96-0013	Hex Wrench	(1)
91	42-92-0136	Front Cover Assembly	(1)
97	06-81-0023	M3 x 8mm Pan Hd. Screw	(6)

PERMANENT BASE ASSEMBLY

**SCREW TORQUE
SPECIFICATION
CHART ON PAGE 5**

FIG.	PART NO.	DESCRIPTION OF PART	NO. REQ.
1	06-14-0240	Hex Bolt	(4)
2	42-92-3023	Permanent Base-Top Cover	(1)
3	22-56-0161	Female Connector	(1)
4	40-50-8934	Spring	(2)
5	22-56-0162	Connector Bottom	(1)
6	42-92-3024	Permanent Base-Bottom Cover	(1)
7	44-52-1075	Permanent Base Foot Pad	(4)
8	06-55-3798	Hex Nut	(4)
9	06-82-9702	PB2.6 x 8mm Pan Hd. Torx Screw	(13)
10	05-90-0067	Flat Washer	(4)
11	43-44-8007	Permanent Base Cable Gasket	(1)
12	22-56-0163	Female Connector Jacket	(1)
93	14-46-0421	Permanent Base Service Kit	(1)



MAGNETIC BASE ASSEMBLY

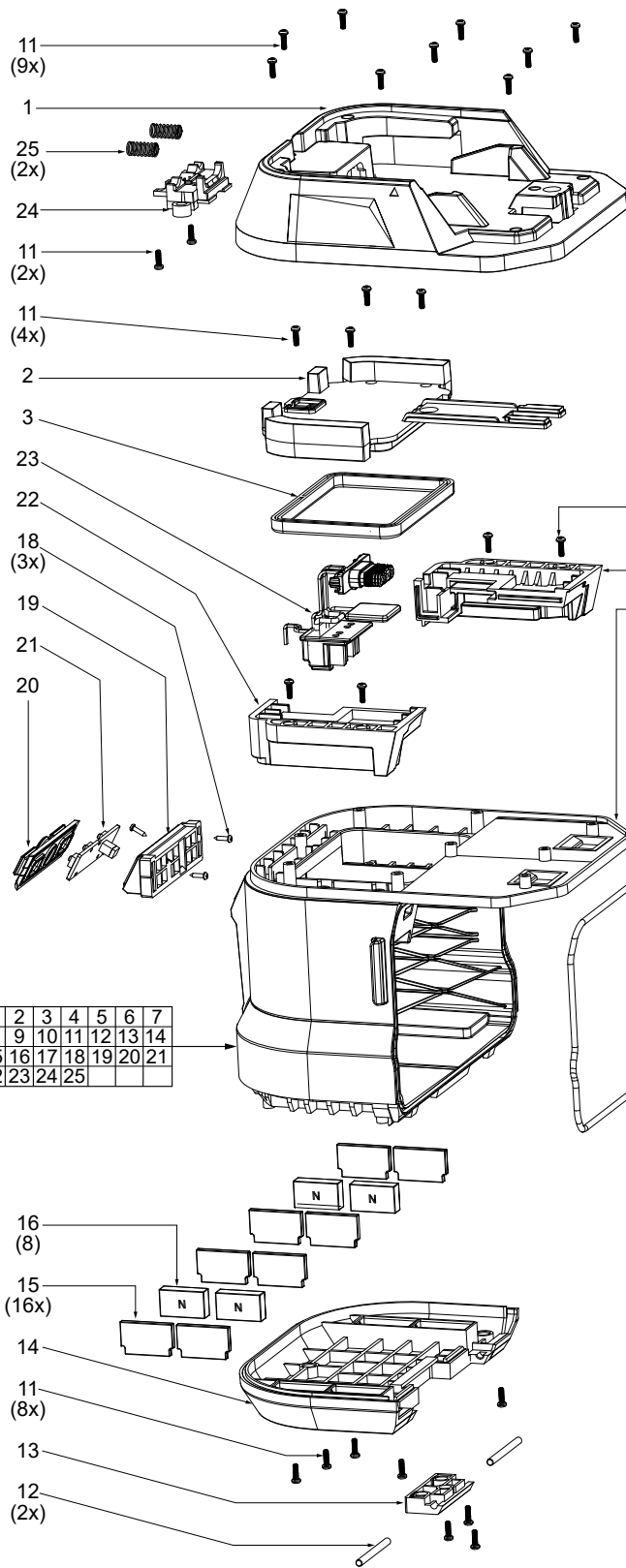


FIG.	PART NO.	DESCRIPTION OF PART	NO. REQ.
1	-----	Auxiliary Base-Top Cover	(1)
2	-----	Base Car Battery Cover	(1)
3	-----	Base Car Battery Gasket	(1)
4	-----	Battery Fit Base-Right	(1)
5	-----	Main Body Base	(1)
6	-----	Latch Clamp	(2)
7	-----	Latch	(2)
8	-----	Latch Pin	(2)
9	-----	Auxiliary Base-Battery Door	(1)
10	-----	Auxiliary Base-Battery Base Front	(1)
11	-----	PB2.6 x 8mm Pan Hd. Torx Screw	(33)
12	-----	Pin	(2)
13	-----	Hinge Block	(1)
14	-----	Auxiliary Base-Battery Base Rear	(1)

SCREW TORQUE SPECIFICATION CHART ON PAGE 5

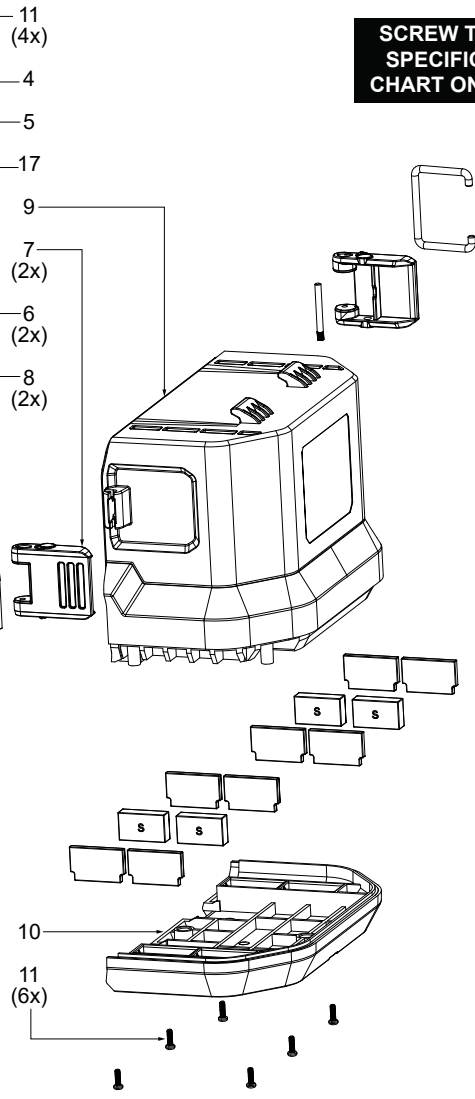
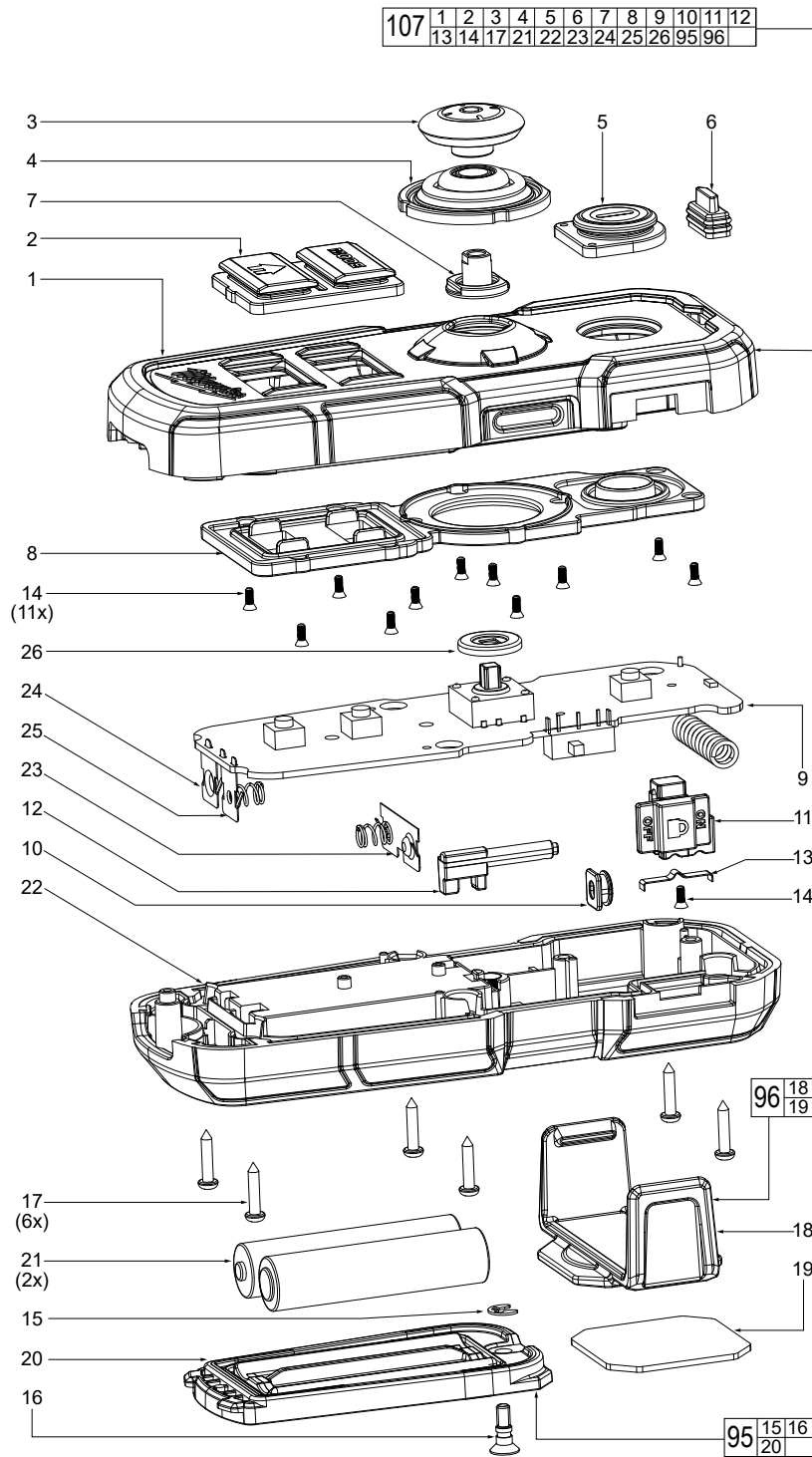


FIG.	PART NO.	DESCRIPTION OF PART	NO. REQ.
15	-----	Magnet Holder	(16)
16	-----	Magnet	(8)
17	-----	Main Body Gasket	(1)
18	-----	PA2 x 8mm Pan Hd. Torx Screw	(3)
19	-----	Button Cover	(1)
20	-----	Button	(1)
21	-----	Button PCBA	(1)
22	-----	Battery Fit Base-Left	(1)
23	-----	Battery Connector Block	(1)
24	-----	Connect Bottom Holder	(1)
25	-----	Spring	(2)
94	31-12-0067	Magnetite Base Assembly	(1)
	12-20-5405	Service Nameplate (Not Shown)	(1)



**SCREW TORQUE
SPECIFICATION
CHART ON PAGE 5**

REMOTE AND BRACKET

FIG.	PART NO.	DESCRIPTION OF PART	NO. REQ.	FIG.	PART NO.	DESCRIPTION OF PART	NO. REQ.
1	-----	Top Cover	(1)	17	-----	Screw	(6)
2	-----	Remote Button Cover	(1)	18	-----	Remote Bracket Base	(1)
3	-----	Handle	(1)	19	-----	Remote Base Adhesive Pad	(1)
4	-----	Remote Button Rubber	(1)	20	-----	Battery Door	(1)
5	-----	Power Button Cover	(1)	21	-----	AAA Battery	(2)
6	-----	Top Cover Lens	(1)	22	-----	Remote Back Cover	(1)
7	-----	Handle standoff	(1)	23	-----	Battery Spring	(1)
8	-----	Remote Button Support	(1)	24	-----	Positive Connector	(1)
9	-----	PCBA	(1)	25	-----	Negative Connector	(1)
10	-----	Rubber Switch Cover	(1)	26	-----	Pad	(1)
11	-----	Switch Cover-01	(1)	95	31-21-0238	Battery Door Service Assembly	(1)
12	-----	Switch Cover-02	(1)	96	14-46-0426	Bracket Service Kit	(1)
13	-----	Leaf Spring	(1)	107	22-80-0019	Remote Control Assembly	(1)
14	-----	Screw	(12)				
15	-----	E-Washer	(1)				
16	-----	Screw	(1)				

SCREW TORQUE SPECIFICATIONS

FIG.	PART NO.	DESCRIPTION OF FASTENER	WHERE USED	SEAT TORQUE	
				(KG/CM)	(lbf.in)
PAGE 1					
8	06-82-9704	PA2 x 8mm Pan Hd. Torx Screw	Support cover-right	3.0-3.5	2.60-3.04
97	06-81-0023	M3 x 8mm Pan Hd. Screw	Front cover & teather to heat sink, gear	5.5-6.0	4.77-5.21
PAGE 2					
9	06-82-9702	PB2.6 x 8mm Pan Hd. Torx Screw	Permanent base top and bottom cover	4.0-4.5	3.47-3.91
PAGE 3					
11	06-82-9700	PB2.6 x 8mm Pan Hd. Torx Screw	Top cover, battery cover, battery fit bases, battert rear base, battery front base	4.0-4.5	3.47-3.91
18	06-82-9701	PA2 x 8mm Pan Hd. Torx Screw	Base car button PCBA, base car button cover	2.5-3.0	2.17-2.60
PAGE 4					
16	-----	KBM2.5 x 9mm Phillips Screw	Battery cover	2.0-2.5	1.74-2.17

