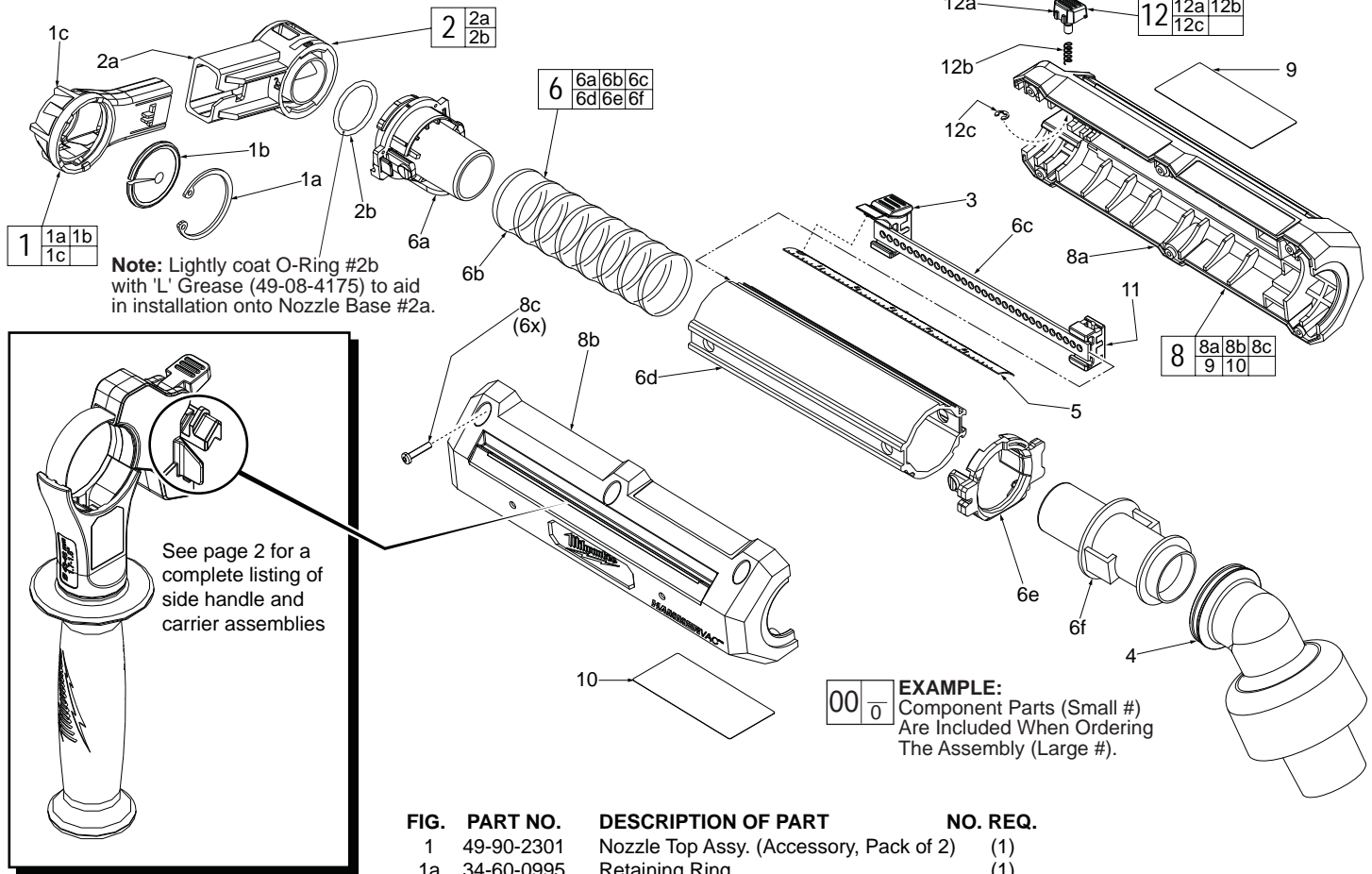


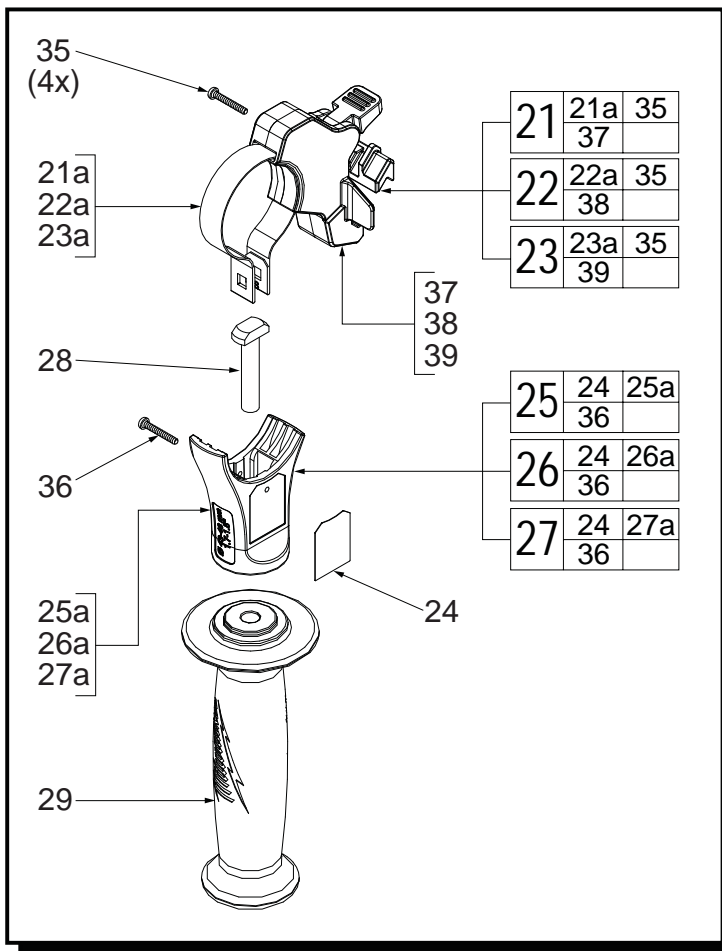


SERVICE PARTS LIST

BULLETIN NO.
54-05-0015

SPECIFY CATALOG NO. AND SERIAL NO. WHEN ORDERING PARTS		REVISED BULLETIN	DATE
Vacuum Assisted HAMMERVAC™ Dust Extractor			Mar. 2015
CATALOG NO.	5261-DE	SERIAL NUMBER	G64A
			WIRING INSTRUCTION





SMALL HANDLE CARRIER ASSEMBLY

FIG.	PART NO.	DESCRIPTION OF PART	NO. REQ.
21	14-48-0200	Handle Carrier Assembly - Small	(1)
21a	44-90-1120	Locking Ring - Small	(1)
35	05-81-1300	M3 x 10mm Pan Hd. T-10 Screw	(4)
37	-----	Handle Carrier - Small	(1)

MEDIUM HANDLE CARRIER ASSEMBLY

FIG.	PART NO.	DESCRIPTION OF PART	NO. REQ.
22	14-48-0250	Handle Carrier Assembly - Medium	(1)
22a	44-90-1140	Locking Ring - Medium	(1)
35	05-81-1300	M3 x 10mm Pan Hd. T-10 Screw	(4)
38	-----	Handle Carrier - Medium	(1)

LARGE HANDLE CARRIER ASSEMBLY

FIG.	PART NO.	DESCRIPTION OF PART	NO. REQ.
23	14-48-0275	Handle Carrier Assembly - Large	(1)
23a	44-90-1160	Locking Ring - Large	(1)
35	05-81-1300	M3 x 10mm Pan Hd. T-10 Screw	(4)
39	-----	Handle Carrier - Large	(1)

SMALL HANDLE HOUSING ASSEMBLY

FIG.	PART NO.	DESCRIPTION OF PART	NO. REQ.
24	10-20-4344	Side Handle Warning Label	(1)
25	14-34-1020	Handle Housing Assembly - Small	(1)
25a	43-76-0830	Handle Housing - Small	(1)
36	05-88-0780	M3 x .75 Pan Hd. Plastite T-10 Screw	(1)

MEDIUM HANDLE HOUSING ASSEMBLY

FIG.	PART NO.	DESCRIPTION OF PART	NO. REQ.
24	10-20-4344	Side Handle Warning Label	(1)
26	14-34-1040	Handle Housing Assembly - Medium	(1)
26a	43-76-0840	Handle Housing - Medium	(1)
36	05-88-0780	M3 x .75 Pan Hd. Plastite T-10 Screw	(1)

LARGE HANDLE HOUSING ASSEMBLY

FIG.	PART NO.	DESCRIPTION OF PART	NO. REQ.
24	10-20-4344	Side Handle Warning Label	(1)
27	14-34-1060	Handle Housing Assembly - Large	(1)
27a	43-76-0860	Handle Housing - Large	(1)
36	05-88-0780	M3 x .75 Pan Hd. Plastite T-10 Screw	(1)

FIG.	PART NO.	DESCRIPTION OF PART	NO. REQ.
28	42-32-0840	T-Bolt	(1)
29	31-05-5379	Side Handle	(1)